

**High  
Definition  
Era**

**Full  
HD**

**FENTEX**  
medical

Full  
HD

**FENTEX**  
medical





LAPAROSCOPY 10mm  
ARTHROSCOPY/ENT 4mm  
HYSTERO/CYSTOSCOPY 4mm  
FLEXIBLE



Three programmable buttons  
for AWB, Freeze, Mirror,  
Zoom, Peripheral triggering



**Txt**

Text generator with keyboard  
connection

**FENTEX**  
medical



## MIRROR EFFECT

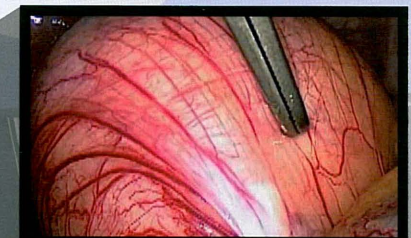
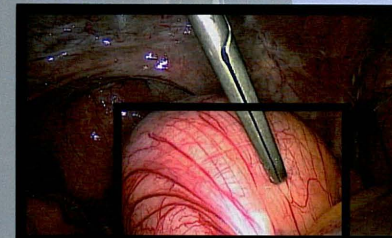
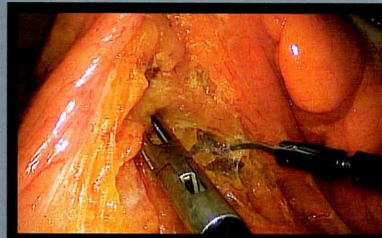
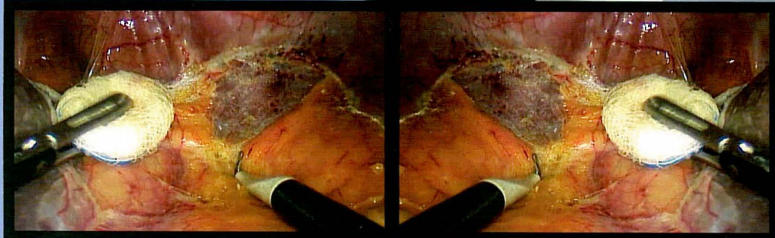
To optimize  
your operatory postures

## FREEZE FRAME

To share your diagnosis live

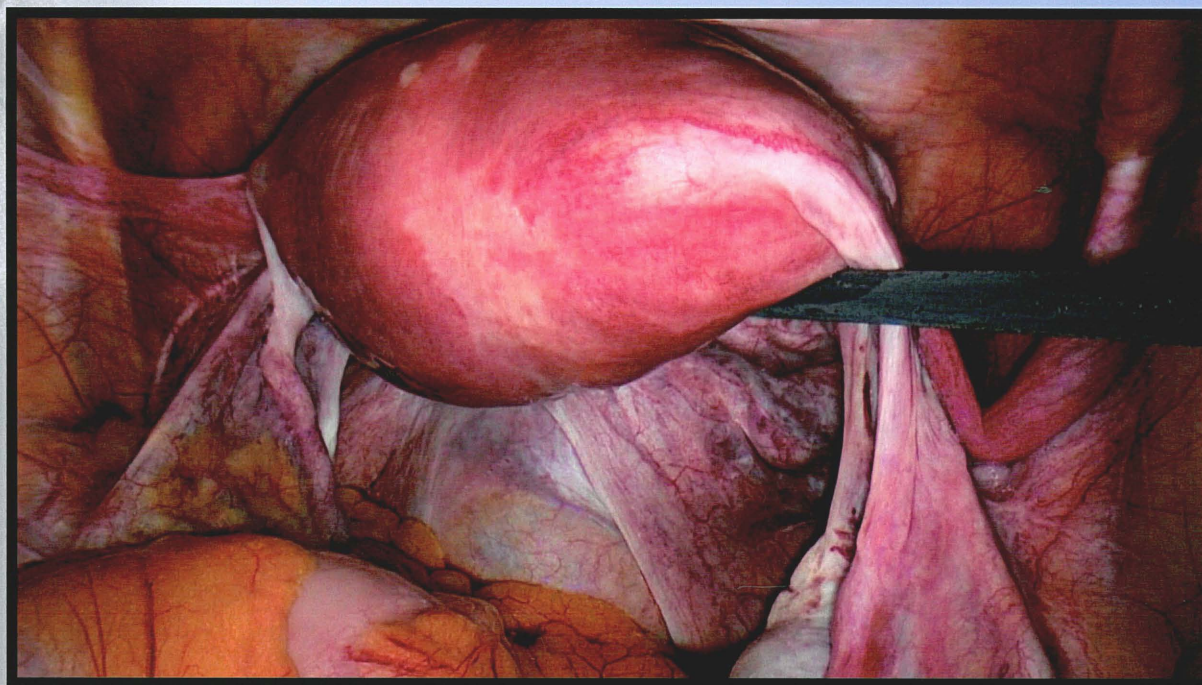
## DIGITAL ZOOM

1 to 2.5 magnification to highlight the smallest details





# New Image - New dimension - New definition - **FULL HD**



## Our technological choices

- **HDTV Standard 1080p & Progressive scan technology**

The movie picture quality of the professional HDTV 1080p is now ready for you. The advantage of the 1080p signal is that a full field progressive image is fed to the LCD monitor. The monitor no longer needs to handle field management itself with its associated loss of quality. Fast movements are displayed with sharp definition and fatigue-free surgery is the result.

- **16/9" wide screen acquisition**

1920x1080 pixels with full fidelity on 16/9 LCD monitors. Its large field of view is close to the eyes natural vision.

- **DVI and HD-SDI Digital outputs**

**DVI** is the direct digital signal. The highest quality HDTV standard 1080p is available at the DVI output. **DVI** is used to connect directly to the HD monitor.

**HD-SDI** is a professional 1080i format ensuring transfer of the endoscopically generated HDTV images without losses. This signal is used directly for live image transmission to neighboring rooms. No signal conversion is necessary.



# Technical specifications

## Full HD camera control unit (CCU)

- Class I product
- 3 Programmable buttons
- Digital zoom up to 2.5x
- Freeze and Mirror
- Menu per application
- Digital processing 3 x 19 bits
- Automatic white balance, Range: 2800K to 6500K
- Two peripherals triggering
- 5 languages (English, French, German, Spanish, Italian)
- Color bar generator
- Automatic and manual adjustment of color
- Color Matrix 12 axes
- Last video settings automatically saved
- Automatic (1/50 to 1/100 000)
- Adjustable shutter area
- Video settings displayed on screen
- Text generator with Keyboard connection
- Gamma adjustment
- Automatic and manual adjustment of light intensity
- Automatic adjustment of sensitivity to low light conditions (auto exposure control)
- Details adjustment
- Digital Noise Reduction: OFF / LOW / HIGH
- Automatic compensation function for the blemish pixels
- Size of the control unit: W: 300mm; D: 311mm; H: 125 mm
- Weight of the control unit: 2500 g

## Full HD camera head

- BF Type applied part
- Sensor: 3 CCD 1/3"
- Capturing aspect ratio on the CCD: 16 / 9 ("wide - screen format acquisition")
- Progressive Scan Technology
- HDTV format: Resolution : 1920\*1080 pixels
- 14 bits processing
- Definition: 700 lines
- Sensitivity: 1,5 lux
- Signal / Noise ratio : 70dB
- Cable length: 3 meters
- C-Mount
- Dimensions of the sensor: 37\*50\*95 mm
- Weight of the sensor: 250 g

## Typical Operating Requirements

- Input Voltage: 100 - 230 VAC @50/60 Hz
- Power Consumption: 45 VA
- 2 T 2.5A - 250 V fuses (Only fuses marked UR)
- Continuous Service

## Video outputs

- 1 VBS: 1.0 V [P-P] / 75 ohms Sync Negative,
- 1 Y/C: Y: 1.0 V [P-P] / 75 ohms, C: 0.286 V [P-P] (NTSC), C: 300 Vpp V [P-P] (PAL) / 75 ohms Sync Negative,
- 1 RGB: 3x0.7 V [P-P] & 0.3V [P-P] / 75 ohms
- 2 HD-SDI: 0.8 V [P-P] / 75 ohms SMPTE292M
- 1 DVI-D: 3x0,7Vcc & 0,3Vcc/75ohms

## Conformity to standards

- Not protected against waterfalls (IPX0)
- Not adapted to a use close to a mixture of inflammable anesthetic with air or oxygen or nitrous oxide.
- Comply with the European standard 93/42/CEE.
- Comply with the international standards IEC 60601-1; IEC 60601-2-18 ; IEC 60417 and EN 980
- Comply with the European Directive 2002/96/EEC on Waste Electrical and Electronic Equipment (WEEE).

# Ordering Information

507004FX	Digital FULL HD 16/9 3CCD CCU, HDTV / PAL compatible
	Digital FULL HD 16/9 3CCD CCU, HDTV / NTSC / compatible
	Digital FULL HD 16/9 3CCD CCU, HDTV / PAL compatible, DV output
	Digital FULL HD 16/9 3CCD CCU, HDTV / NTSC compatible, DV output
	Digital FULL HD 16/9 3CCD camera head, C-mount, HDTV

507024FX	24mm HD coupler, C-mount, scope holder
507036FX	16-34mm HD Zoom
507104FX	Medical Keyboard, soakable, QWERTY, PS2
	300 Watts Xenon light source UE
	26" Medical-grade flat panel
	24" Medical-grade flat panel

FENTEXmedical GmbH  
 Take-off, GewerbePark 2  
 D-78479 Neuhausen o. E.  
 Germany

**FENTEX**  


info@fentexmedical.com  
 www.fentexmedical.com